

# CrystalView Quad DVI CATx

Digital CATx Extender



## Digital CATx KVM extender

- Extends DVI Video, keyboard, mouse, serial, and audio signals up to 400 ft (120m) away
- Supports DVI-D video at resolutions up to 1920 x 1200 @ 60Hz
- Serial and Audio capability (optional)
- Supports CAT5, CAT5e, and CAT6 cables
- PS/2 and USB keyboard and mouse support
- Quad video
- Easily adapted to your system

## Features and Benefits

- Supports:
  - DVI-D video modes
  - PS/2 and USB keyboards and mice
- Extend a KVM station from a CPU using CATx cable up to 400 feet (120 m)
- Video resolutions up to 1920 x 1200 @ 60Hz
- Supports 16/24-Bit color (user selectable)
- Local KVM access
- Quad video
- Optional serial support with rates up to 19.2KBaud
- Optional bi-directional audio support
- Compatible with all operating systems
- Fully automatic KVM sharing
- Status and Data error indicators on all units
- Easy installation and operation
- Rack mountable options

Note : CATx = CAT5, CAT5e, CAT6, or Cat7 solid core cables

## CrystalView Quad Video Advantage . .

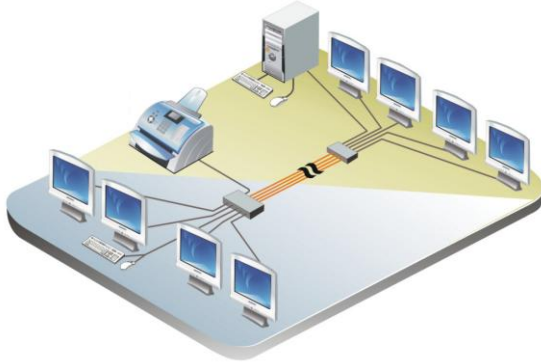
The CrystalView Quad DVI CATx is the KVM extender of choice for businesses that need to extend and operate a computer, server, or KVM switch from a great distance. The CrystalView DVI CATx makes this possible by the use of standard CAT5, 5e, 6, or 7 cable. You can fully operate and control a computer or server from as far away as 400 feet using standard CATx cable. It supports all combinations of DVI-D monitors and video cards.

The system consists of two units; a transmitter and a receiver. The transmitter connects to your CPU's keyboard, mouse, DVI-D monitors, and optional serial and audio ports. The receiver connects to a keyboard, DVI-D video monitors, mouse, and optional serial and audio devices. The transmitter and receiver are connected together with four CATx industry standard cables. The receiver can be up to 400 feet from the transmitter using CAT5, 5e, 6, or 7 cables.

The unit has both transmitter and receiver KVM access. The transmitter's KVM access allows an additional KVM monitor for each video channel to be connected to the transmitter unit.



## Typical Application



Quad DVI Video Application

**CrystalView DVI CATx basics:** The CrystalView Quad DVI CATx system consists of a transmitter that connects to a PC, and a receiver that connects to a keyboard, monitors, and mouse. The transmitter and receiver units are connected together with up to 400 feet of standard CATx cable. Serial / audio options connect to the computers serial and audio ports and to the corresponding ports on the transmitter. The serial / audio receiver connects to a set of speakers and to a supported serial device.

**Models:** The CrystalView Quad DVI CATx is available in a PS/2 and USB model. All models allow for a second KVM station to be connected to the transmitter unit, providing operation from the transmitter or the receiver unit. The quad video feature supports systems that need to digitally transmit from four video sources. The serial and full stereo audio option provides extended serial and audio support.

**Installation:** Installing the CrystalView Quad DVI CATx units is as easy as connecting the KVM station to the receiver, connecting the CPU to the transmitter, and connecting the transmitter to the receiver with four CATx cables. Serial and audio options connect to the corresponding ports on the computer and local unit. The remote unit connects to a set of speakers and a supported serial device.

**Keyboard and Mouse emulation:** The transmitter unit emulates a keyboard and mouse. The PC will boot correctly with only the transmitter unit connected.

## Part Numbers:

CRK-2DTXUD4D USB, DVI-D, Quad video

/AUD = Serial and Audio option

## Specifications:

Dimensions	9.0W x 5.625D x 1.75H (in) 22.8W x 14.4D x 4.45 (cm)
Weight	Transmitter – 1.14 lbs / 0.52 kg Receiver – 1.12 lbs / 0.51 kg
Operating Temp	5°C – 45°C / 41°F – 113°F
Humidity	80% max, non-condensing
Resolution	1920 x 1200 @60 Hz
Serial	Speed – 19,200 Baud Data - Format independent Flow Control – RTS, CTS, DTR, DSR
Audio	Bi-directional stereo audio CD-quality (16-bit, 38.4KHz) Line level – 5V p-p +17db microphone amplification setting option
Connectors	Video – 4 DVI-I Keyboard – PS/2 and USB Mouse – PS/2 and USB Serial – DB9F Audio – 3.5mm stereo jack
Power	90-240 VAC to 5.0 VDC / app. 10W
Max distance	400' (120m) CATx cable (AWG24)
Indicators (LEDs)	Front panel – power Video check LED RJ45 LEDs – Data error / status
Approvals	CE



CrystalView Quad DVI CATx (Serial / Audio option shown)