



CAT5/CAT6 KVM extender

Extends keyboard, video, mouse, audio and serial up to 1,000' over CAT5/6 cable

Video resolutions up to 1600 x 1200

Supports USB 1.1 and 2.0 HID, serial, and audio option

VGA Video tuning is made easy with simple keyboard commands

Skew compensation to support CAT5, CAT5e, and Cat6 cable

Available in single or dual video

Features and Benefits

- Single or dual video models available
- Video resolutions up to: 1600 x 1200 @ 60Hz (650')
1280 x 1024 @ 75Hz (1000')
- Internal DDC information can be disabled or read from the remote monitors
- Integrated skew adjustments for compensating different CATx cable types
- Independent low and high frequency equalization adjustments
- All control and video adjustments are easily made with simple keyboard commands
- USB Features:
 - Compatible with any USB 1.1 and 2.0 host (Full-speed – 12 Mb/s)
 - Supports a max of 7 USB devices including hubs
- Audio options:
 - Full stereo audio can be transmitted either direction across the link (simultaneously)
 - Digital CD quality audio
 - Supports stereo speakers and microphone
- Serial option:
 - Supports serial baud rates up to 19.2 baud
 - Supports Transmit, Receive, and two hardware handshaking lines
- Full keyboard and mouse emulation
- Remote unit private mode feature
- Compatible with Rose Electronics KVM switches
- Compatible with Windows, UNIX, Linux, and other operating systems
- All settings stored in flash memory upgradeable through the USB port

19" Rackmount shelf kit available

The CrystalView™ Plus Advantage .

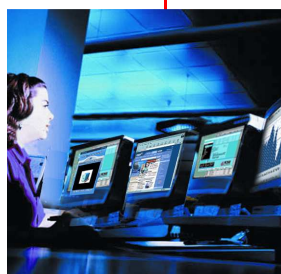
The CrystalView Plus series of enhanced KVM extenders allow you to position your KVM station up to 1,000 feet (300 meters) away from your computer using CATx cabling. If your computer supports dual video, the CrystalView Plus USB dual model can fully support it.

The CrystalView Plus USB has gone one step further and eliminated adjustment knobs and jumper switch settings. Integrated controls that adjust for skew, low and high frequency equalization, and RGB delay for each channel have been made easy by simple keyboard commands.

Each channel (single or dual) can be adjusted independently or global settings can be applied for all. These adjustments make for a crystal clear image using CAT5, CAT5e, or CAT6 cabling.

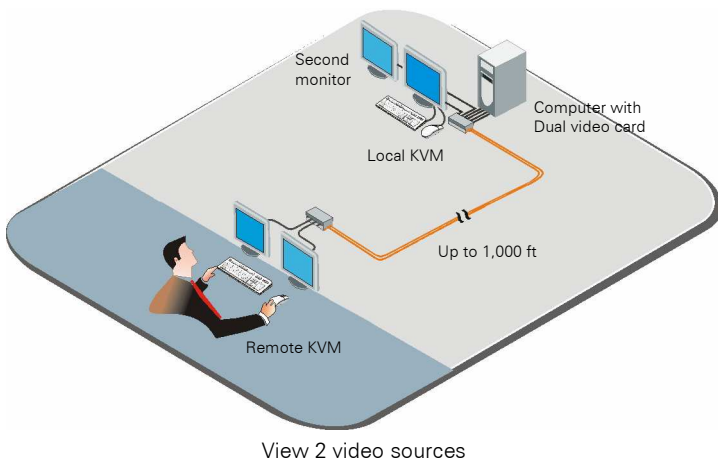
The stereo audio option produces low-noise CD quality sound. Speakers, headphones, or a microphone can be connected to the remote unit. It's perfect for call centers, trader's desks, kiosks, TV stations, and other applications where multiple video sources are used and need to be extended from the computer.

The bi-directional serial option allows you to connect a touchscreen, digital tablet, serial printer or other supported serial device to the remote location. No set-up is needed; just connect the serial device to the serial port and it's ready to use.



View single, or dual, video 1,000 feet away

Typical Application



Overview The CrystalView Plus USB series CATx KVM extenders are usually sold in pairs, a local unit and a remote unit. The local unit connects to your computer or KVM switch and the remote unit connects to a keyboard, monitor, and mouse. The Local and remote units are connected together with standard CAT5, CAT5e, or CAT6 cable. To compensate for these different cable types, the CrystalView Plus USB has a built-in RGB compensator that can incrementally adjust the red, green, and blue color delay in 2.8ns increments. This feature and the skew compensation provide for a crystal clear image using any CATx type cable. All configuration and video tuning is performed using simple keyboard commands from the remote unit.

Installation Installing the CrystalView Plus USB is as simple as connecting the computer or KVM switch to the local unit, a KVM station to the remote unit and connecting the local and remote units together with CATx cable. Using standard CAT5 cable, no skew compensation is needed. If you're using other than CAT5 cable or several patch panels, some compensation may be needed. This is easily done using simple keyboard commands.

Extending to a Rose switch In addition to extending a KVM station from a computer, you can also connect the local unit to a KVM switch providing access up to 1,000 computers.

Local access features The single and dual video models offer an additional KVM station on the local unit providing both local and remote unit access.

Part Numbers

CRK-2U1V Single video, local/remote access
 CRK-2U2V Dual video, local/remote access
 /AUD suffix Audio & Serial option

RM-BR3 Rack Mount shelf for local/remote units

Note: CRK part numbers consist of a local unit and a remote unit

Specifications

Dimensions	Width	Depth	Height	Weight	
Local	(in)	4.75	4.37	1.71	0.95 lbs
	(mm)	120.6	111	43.4	0.44 kg
Remote	(in)	5.50	5.75	1.10	1.15 lbs
	(mm)	140	146	28	0.52 kg

Resolution 1600 x 1200 (60Hz) @ 650'
 1280 x 1024 (75Hz) @ 1,000'

Video Compatibility VGA – UXGA, RGB

Skew 2.8ns steps / 42ns max/color

Connectors:

Keyboard USB Type A
 Mouse USB Type A
 Video HD15F
 Interconnect RJ45
 Serial DB9M/F
 Audio 3.5mm stereo jack
 Power Remote – 5.0VDC, 1.2A adapter
 Local – From CPUs USB port

Environmental:

Operating Temp 0° – 40° C (32° - 104°F)

Storage Temp -30° - 65°C (-22° - 150°F)

RH 5 – 90 % non-condensing

Approvals FCC-A, CE



Rear view Local / Remote units Dual Video



〒103-0014 東京都中央区日本橋蛸殻町 1-16-11

TEL: 03-3668-8089

FAX: 03-3668-9872

URL: <http://www.cybernetech.co.jp>