

## FIELDAGENT™ PLATFORM



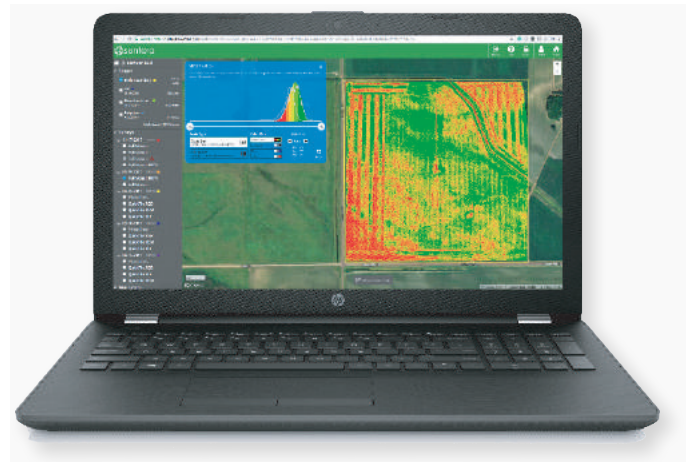
Our FieldAgent™ Platform takes you beyond aerial photos and into meaningful data products with actual economic value, like NDVI zone mapping, population analysis, and elevation mapping.

---

Presenting you with the best real-time plant-health data solution. FieldAgent includes a mobile, web, and desktop interface and performs multiple in-field functions without an internet connection, allowing you to leverage real-time crop health data for in-season plant decisions.

FieldAgent seamlessly syncs your RGB, NIR, NDVI, and NDRE crop health data, analytics, and prescriptions to connected partners and agriculture analytics tools. With FieldAgent, you can even send shapefiles right to the cab of your tractor.

What's more, FieldAgent Mobile flies your DJI or Sentera drone, and ensures every inch of your field is captured.



FieldAgent Web showing NDVI Mosaic with NDVI Toolbox \* capability

# FIELDAGENT™ PLATFORM

## FEATURES & BENEFITS

- Make in-season decisions using real-time data
- Convert NDVI values into easy-to-use zone maps
- Assess plant health at the field edge, without an internet connection
- Generate unlimited QuickTile maps and mosaics
- View crop health maps on your mobile device
- Share data with anyone, regardless of whether the recipient has an active FieldAgent account
- Data is compatible with existing agriculture data analytic tools including the John Deere Operations Center, APEX, SST, SMS, FarmWorks, Encirca, FieldView + more
- Export shapefiles (.SHP) right to the cab of your tractor

## ACTIONABLE DATA

### FLY

Using the mobile app, select your field boundary, map type, and let FieldAgent do the rest! FieldAgent will automatically fly your DJI drone in a precise pattern and command your sensor to capture data in all the right places.



FieldAgent Mobile - Autonomous Flight

FieldAgent Desktop - Elevation Maps



### GENERATE MAPS

Import crop health data into FieldAgent desktop, and your maps begin to automatically generate. Choose from either quick, rough maps for spot scouting, or beautifully stitched orthomosaics depending on time and quality requirements.

### ANALYZE & SHARE

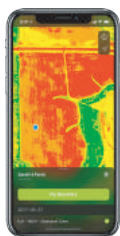
FieldAgent offers a variety of analytic products, enabling detailed analysis of your field - including plant populations, weed locations, and data to assist with variable rate prescriptions creation. Explore the NDVI Toolbox® and dynamically re-color and re-map results. Then, turn analysis into action by exporting data directly to your machinery as shapefiles or rate-controlled prescriptions.



FieldAgent Web - NDVI Orthomosaic + NDVI Toolbox Capability

## THE ONLY COMPLETE PRECISION AG DATA COLLECTION SOLUTION

Sentera's complete solutions enable you to collect and make use of highly precise on-field data in real time. Easily compare, share, and analyze your NDVI plant health data in no time. Creating actionable data has never been easier.



FieldAgent Mobile App

+



Precision scouting tool

=



Highly Precise, Actionable Plant Health Data



〒103-0014 東京都中央区日本橋蛸殻町1-16-11  
TEL : 03-3668-8089 FAX : 03-3668-9872  
URL : [www.cybernetech.co.jp](http://www.cybernetech.co.jp)